

**TOP SECRET**  
NO FOREIGN DISSEM

Copy 93  
4 Pages

NPIC/R-178/63  
August 1963

This report supersedes CIA PIC/JB-27/61, Unidentified Installation Near Tamy-Bulak, USSR, dated June 1961, copies of which should be destroyed.

PHOTOGRAPHIC INTERPRETATION REPORT



# MINING AND PROCESSING ACTIVITY NEAR TAMDY-BULAK, USSR



CIA



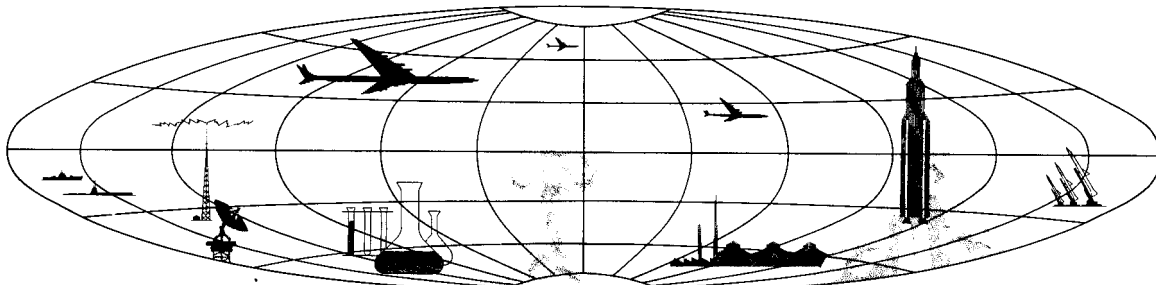
DIA

Handle Via **TALENT - KEYHOLE** Control Only

WARNING

This document contains classified information affecting the national security of the United States within the meaning of the espionage laws U. S. Code Title 18, Sections 793 and 794. The law prohibits its transmission or the revelation of its contents in any manner to an unauthorized person, as well as its use in any manner prejudicial to the safety or interest of the United States or for the benefit of any foreign government to the detriment of the United States. It is to be seen only by personnel especially indoctrinated and authorized to receive TALENT-KEYHOLE information. Its security must be maintained in accordance with KEYHOLE and TALENT regulations.

NATIONAL PHOTOGRAPHIC INTERPRETATION CENTER



**TOP SECRET**

NO FOREIGN DISSEM

GROUP 1  
Excluded from automatic  
downgrading and declassification

## MINING AND PROCESSING ACTIVITY NEAR TAMDY-BULAK, USSR

### INTRODUCTION

25X1A

The purpose of this report is to describe the newly identified mining and processing activities (42-10N 63-35E; [REDACTED]) located 41 nautical miles (nm) northwest of Tamdy-Bulak, USSR, and any other industrial

installations in the area (Figure 1). This report supersedes a previous report, CIA PIC/JB-27/61, Unidentified Installation Near Tamdy Bulak, USSR, Jun 61.

### CONCLUSIONS

There is large-scale mining activity in the vicinity of Aytym. However, all mining activity at this time would seem to be exploratory in nature. The large piles of dumped earth suggest that very little of the surface mining has been removed. The small ore-processing plant

has limited facilities and would seem to be more of an assay-type installation than an installation for quantity production. At this stage of activity there is little indication of the type of mineral being mined.

### DESCRIPTION

The activity encompasses a large complex 5 by 4 nm. The railroad serving the complex joins the Samarkand-Ashkhabad main line at Kermine and an aircraft landing area is located on the east edge of the complex. Areas A through M, which comprise the complex, are shown on Figure 2. All measurements are approximate.

Housing Area (Area A). The housing area is irregularly shaped and measures 2,550 by 2,300 feet overall. It consists of 112 single-story personnel-type buildings, each 70 by 40 feet; 38 multistory personnel-type buildings, each 90 by 60 feet; 10 warehouse-type buildings, each 120 by 40 feet; and an athletic field with a U-shaped building. Footings for buildings are in place for expansion on the east side of the area. Most of the area is fenced.

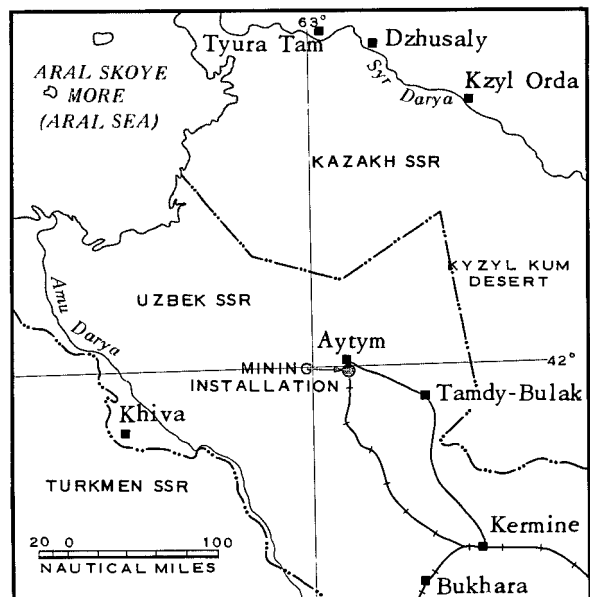


FIGURE 1. LOCATION OF MINING INSTALLATION.

NPIC/R-178/63

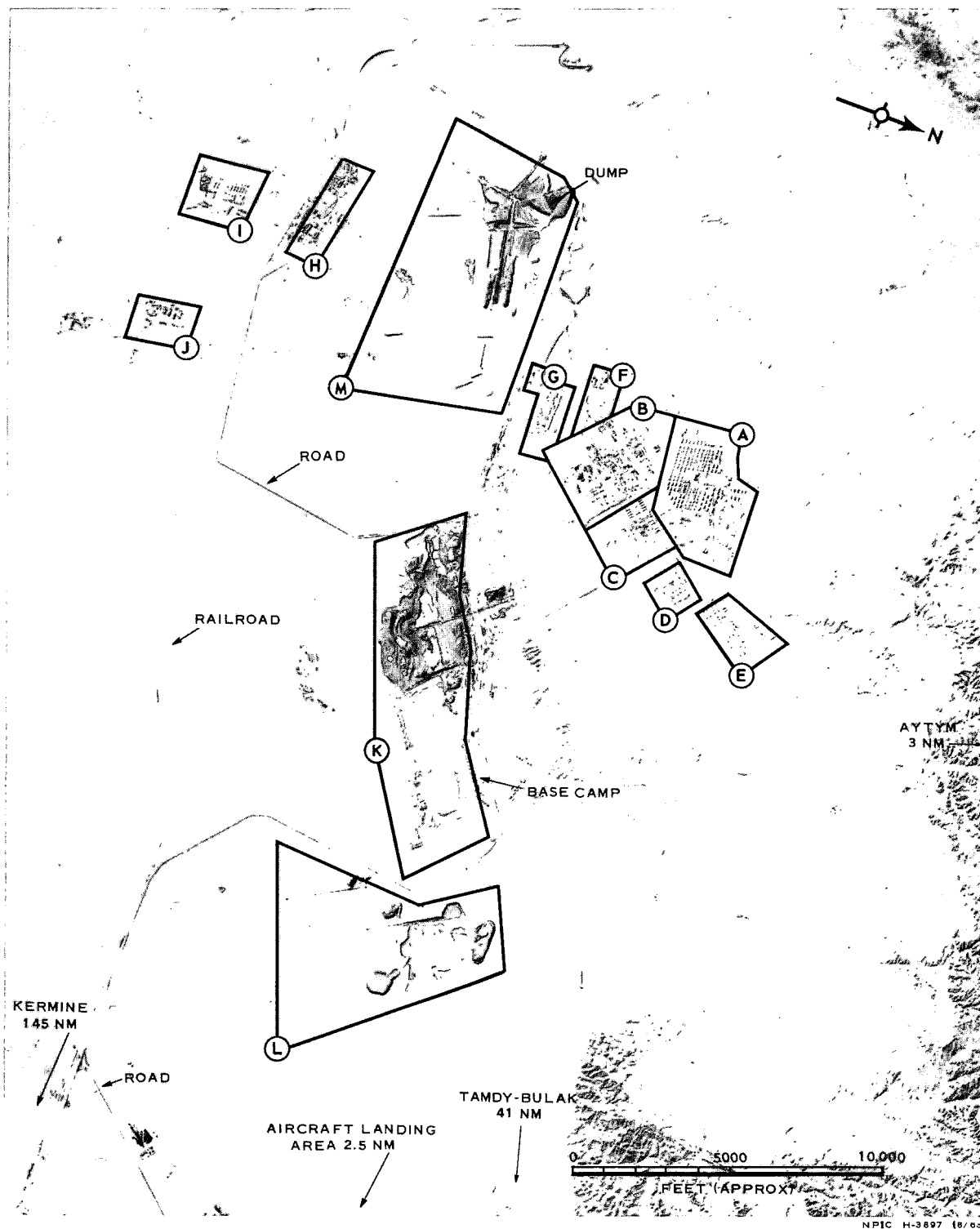


FIGURE 2. MINING INSTALLATION NEAR TAMDY-BULAK, USSR

25X1D

Workshop and Maintenance Area (Area B).

This area measures 2,900 by 2,600 feet, is partly fenced, and is served by six rail spurs. The area consists of one rail-served multistory building, measuring 180 by 120 feet and having a flat roof with vents; one rail-served multistory building, measuring 350 by 170 feet and having a monitor roof; and 12 support-type buildings, averaging 100 by 50 feet in size. Open storage of material and a fenced motor pool containing approximately 15 parked vehicles are observed.

A separate rail-served section in the northwest part of the area contains open storage. A separately fenced POL section contains at least one semiburied vertical tank and several horizontal tanks.

Storage Area (Area C). This area measures 1,500 by 1,150 feet. It contains 14 warehouse-type buildings, averaging 120 by 40 feet. Several smaller support buildings are also located in the area.

Storage Area (Area D). This area is fenced and measures 1,100 by 700 feet. It contains 13 warehouse-type buildings, averaging 120 by 40 feet in size.

Storage Area (Area E). This area measures 1,700 by 1,150 feet. It contains 40 warehouse-type buildings, ranging in size from 40 by 30 feet to 120 by 40 feet. A motor pool, located to the north, contains approximately 20 parked vehicles.

Utility Area (Area F). This area is fenced and measures 1,300 by 650 feet. Several small buildings and possibly some open storage are located in the area.

Open Storage (Area G). This area is fenced and measures 1,250 by 600 feet. It is served by three rail spurs and contains a large warehouse and numerous sections of open storage. A railroad loading point is located adjacent

to the area. A smaller fenced area to the west also contains open storage.

Ore-Processing Plant (Area H). This area is fenced and measures 2,000 by 900 feet. It is rail served and contains: one building measuring 230 by 60 feet and having a vented roof; one multistory E-shaped building, measuring 230 by 120 feet, identified as a possible administration building or a chemical laboratory; and approximately eight small support buildings.

Water Pumping and Purification Plant (Area I). This area is a fenced area containing approximately eight possible covered filter beds.

Utility Area (Area J). This area is fenced and measures 1,200 by 1,050 feet. It contains two buildings, each measuring 140 by 60 feet. The area is road and rail served. Open storage is observed at the railroad siding.

Exploration Area (Area K). This area measures 9,500 by 3,000 feet. The area is rail served and was the first to be exploited. Circular borings and long trenches indicate a ground study which is now progressing eastward. No major transshipment facility is noted.

Exploration Area (Area L). This area measures 3,500 by 1,700 feet. Trenches and borings are discernible. Although the area is rail served, no major transfer point is noted.

Exploration Area (Area M). This area measures 4,500 by 2,300 feet. The area has two long cuts, cruciform in shape, with earth debris piled on both sides of the trenches. Most of the earth debris has been moved to a dump north of the area. Photography of [REDACTED] indicated that additional cuts have been made at the southern and western ends of the area. Although a railroad loading point is located on the eastern side of the dump, there is little indication of earth moving.

25X1D

TOP SECRET RUFF

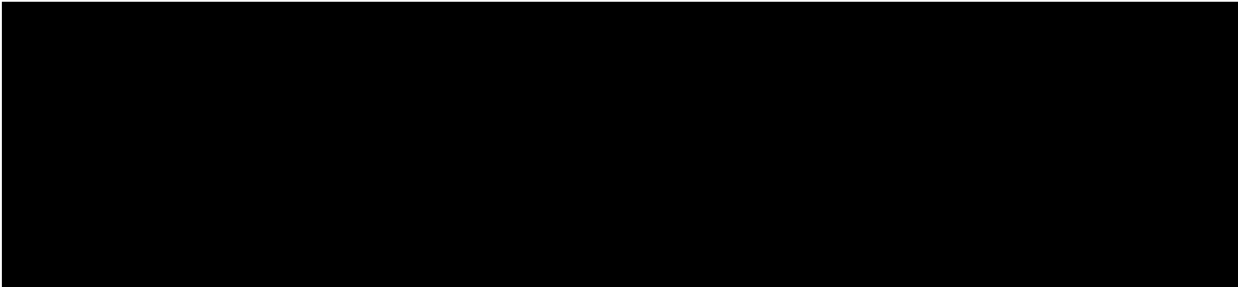
NO FOREIGN DISSEM

NPIC/R-178/63

REFERENCES

PHOTOGRAPHY

25X1D



MAPS OR CHARTS

ACIC. WAC 327, 4th ed, Apr 56, scale 1:1,000,000 (UNCLASSIFIED)  
AMS. Series DESPA-1, Sheet NK 41-5, 1st ed, 10 Dec 60, scale 1:250,000 (TOP SECRET RUFF)

DOCUMENTS

25X1C



25X1C

REQUIREMENT

CIA. OSI/R-195/61

NPIC PROJECT

JN-325/61

TOP SECRET RUFF

NO FOREIGN DISSEM

Approved For Release 2001/08/21 : CIA-RDP78B04560A000800010036-1  
~~TOP SECRET~~  
NO FOREIGN DISSEM

Approved For Release 2001/08/21 : CIA-RDP78B04560A000800010036-1  
~~TOP SECRET~~  
NO FOREIGN DISSEM